



CALIFORNIA'S COVID-19 RESPONSE

July 20, 2020

Sector of Personal Responsibility

Our actions determine when our children go back to school.

Our actions determine how we can connect with family and friends.

Our actions determine when our businesses reopen.

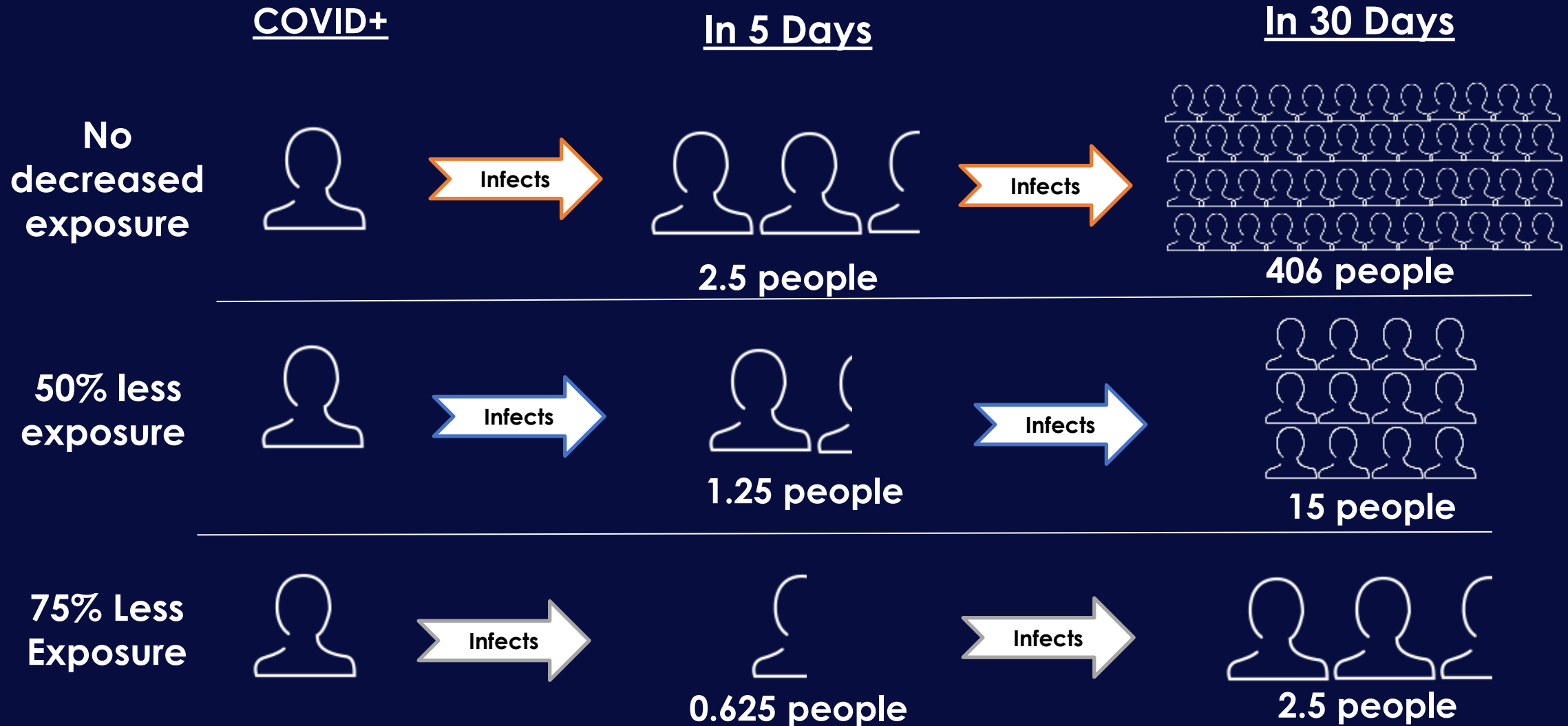
Reduce Risk of COVID-19 Transmission

Lower Risk



Higher Risk

The Power of Minimizing Mixing



Dimmer Actions Taken

Closed Statewide

Indoor operations of:

- Dine-in restaurants
- Wineries & tasting rooms
- Movie theaters
- Family entertainment centers
- Zoos and museums
- Cardrooms
- Bars (including outdoor)

Closed in Counties

Indoor operations of:

- Gyms and fitness centers
- Places of worship and cultural ceremonies
- Offices for non-critical infrastructure sectors
- Personal care services
- Shopping malls

Today's COVID-19 Case Numbers

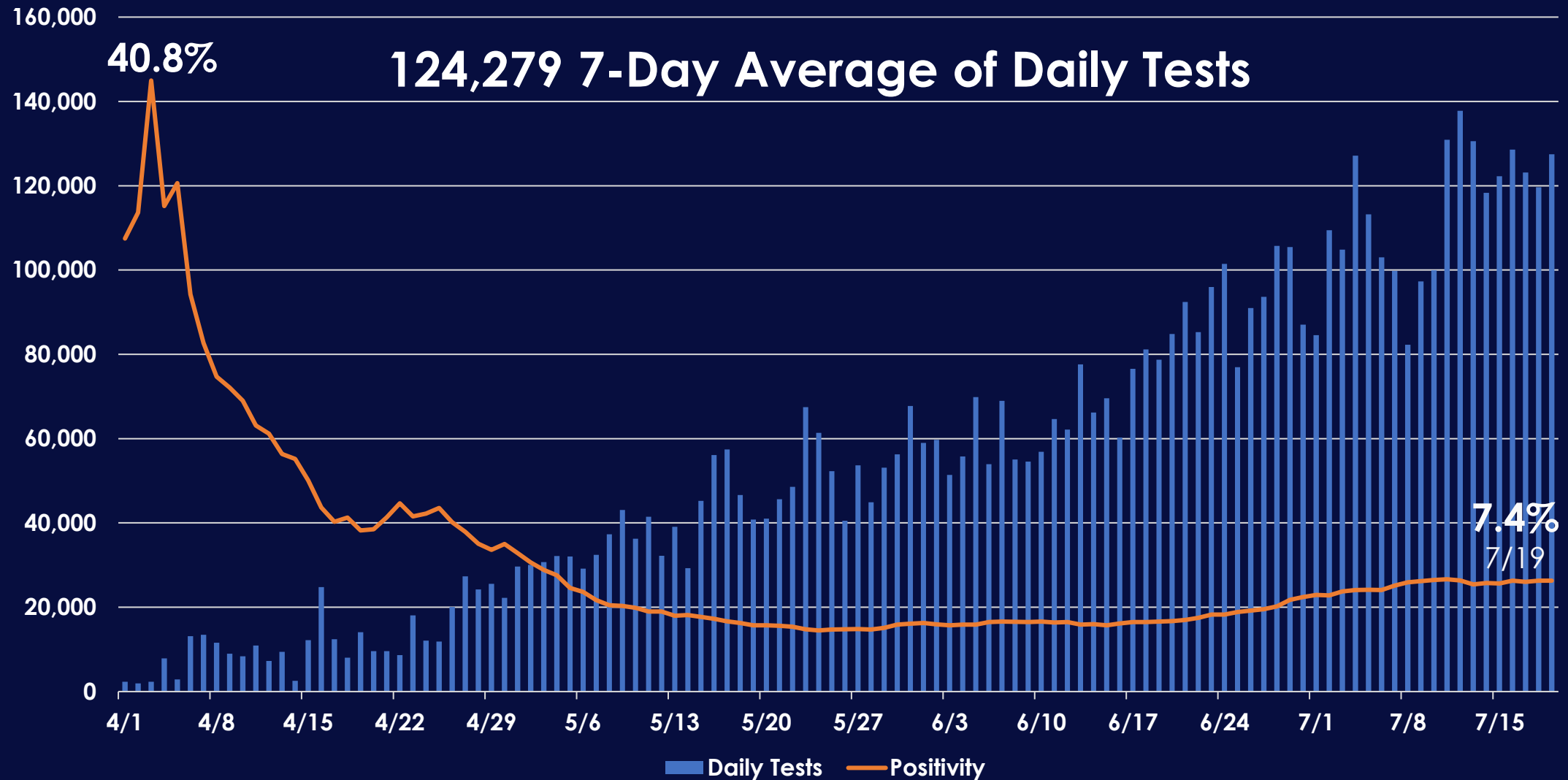
6,846

July 19

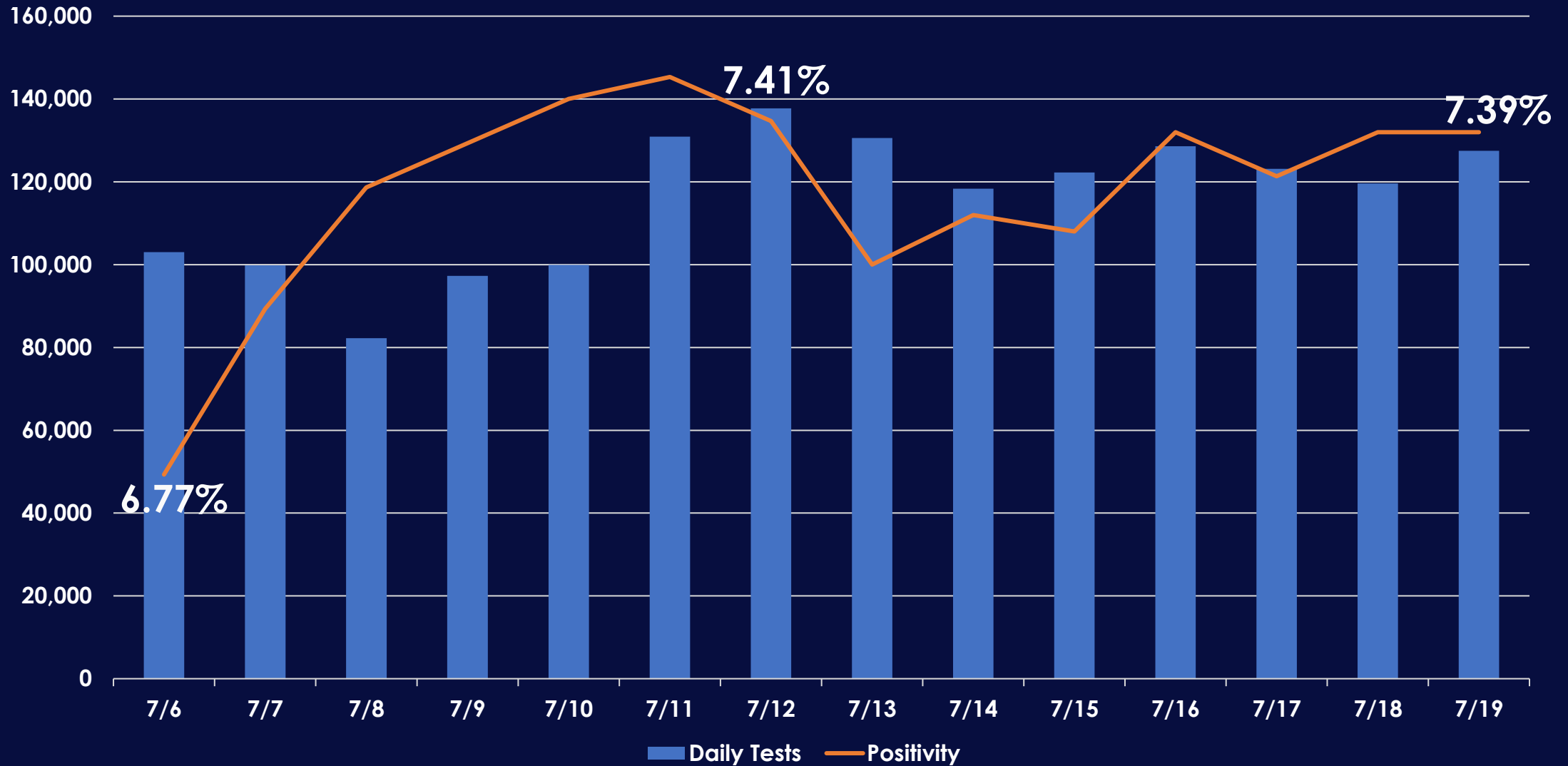
8,911

7-Day Average

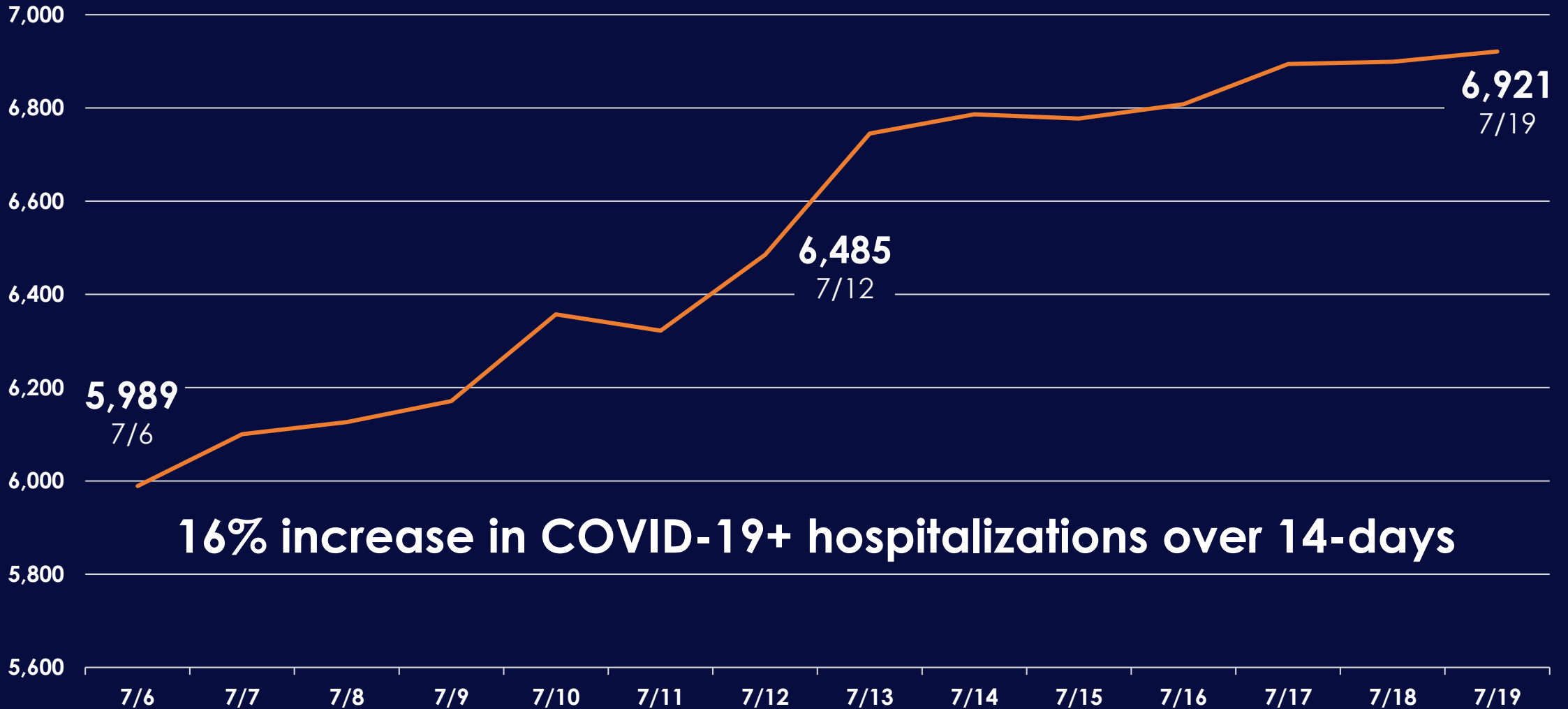
Total Tests vs. Positivity Rate



14-Day Look at Test Positivity Rate



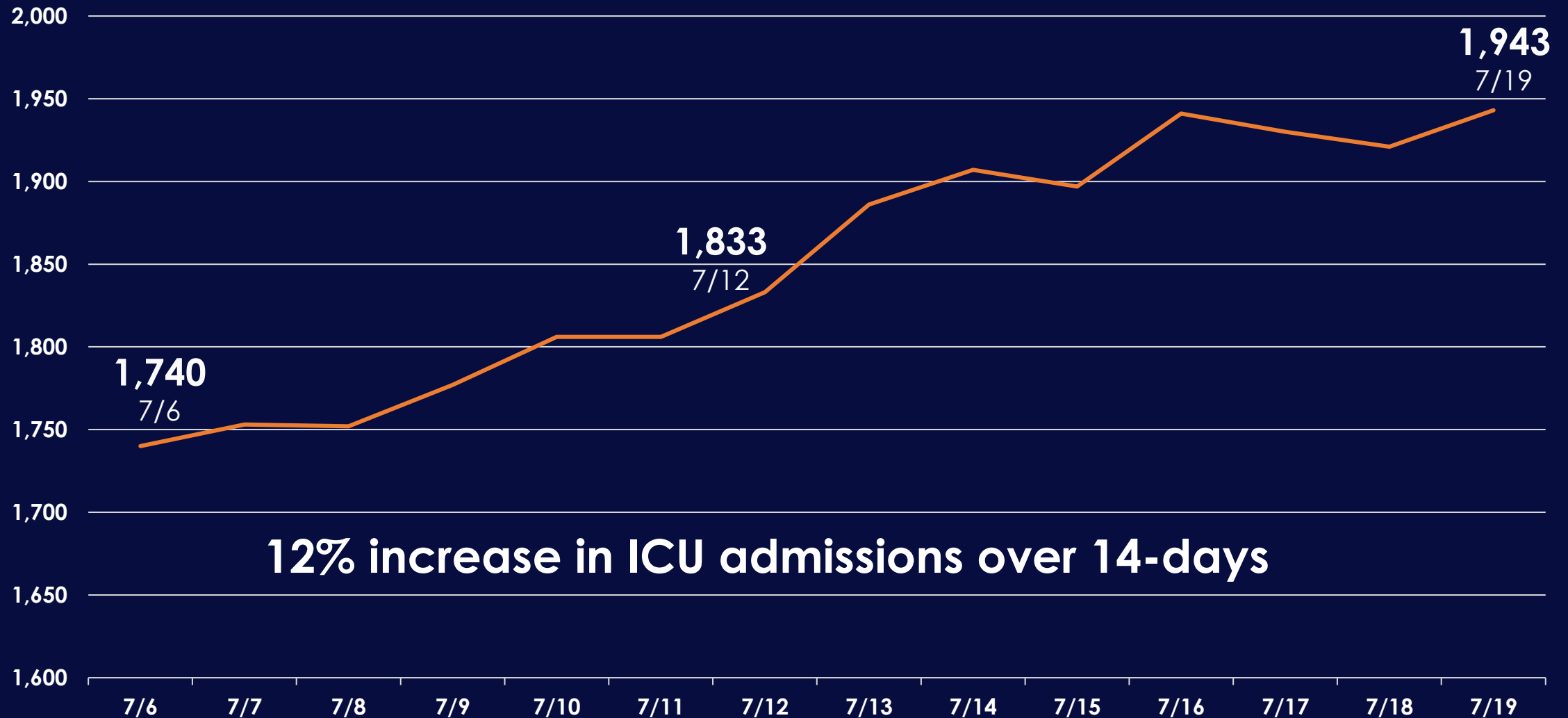
COVID-19+ Hospitalizations are Increasing



California's Healthcare System Capacity



COVID-19+ ICU Admissions are Increasing



California's Critical Care Capacity

1,943

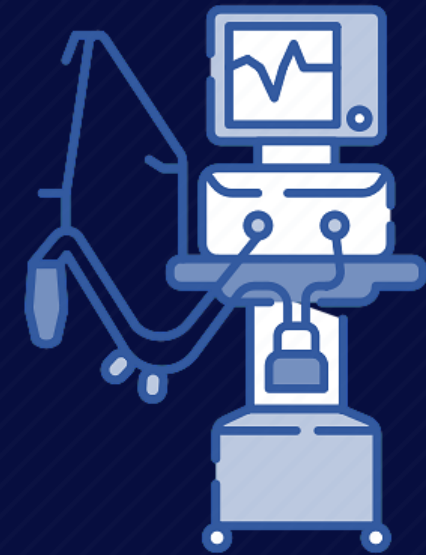
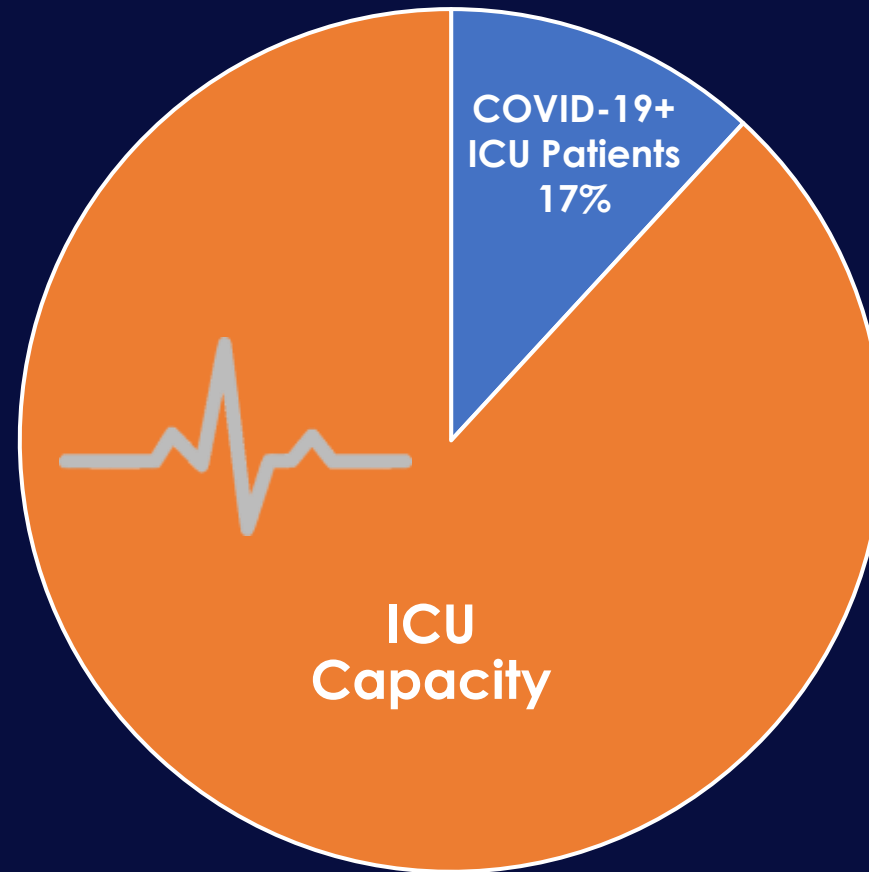
Total ICU
COVID-19+ Patients

4,057

Total ICU & NICU Beds
Available

11,637

Total ICU & NICU Beds



11,932

Ventilators Available

33 Counties on Monitoring List for 3+ Days

Alameda

Colusa

Contra Costa

Fresno

Glenn

Imperial

Kings

Los Angeles

Madera

Marin

Merced

Monterey

Napa

Orange

Placer

Riverside

Sacramento

San Benito

San Bernardino

San Diego

San Francisco

San Joaquin

San Luis Obispo

Santa Barbara

Santa Clara

Solano

Sonoma

Stanislaus

Sutter

Tulare

Ventura

Yolo

Yuba

REMINDER: Your Actions Can Save Lives

Wear a mask

Physically distance

Wash your hands

Minimize mixing



Learn more at
covid19.ca.gov

Schools Reopening

Using data, schools can open for in-person instruction when its county has been off the County Monitoring List for 14 consecutive days.

School districts may seek a waiver for elementary schools.

Schools that don't meet this requirement must begin the year distance learning.

Elementary School Waiver Process

School districts to work with local public departments to offer in-person instruction in counties on the County Monitoring List

School and district leaders must initiate the request for the waiver in consultation with labor, parents and community-based organizations.

California provided for the waiver because:

- Younger students are lower risk to be vectors of COVID-19**
- Earlier return allows them to benefit from in-person instruction**

COVID-19 Safety Enforcement Since July 2

836,678 in person visits, phone calls, flyers, webinars, and emails to businesses by all state regulatory agencies.

Department of Alcoholic Beverage Control:

- 18,172 in-person visits to bars & restaurants

Department of Industrial Relations & Division of Occupational Safety and Health:

- 23,984 in-person visits to places of work