



<http://sangabrielmountains.org/>

San Gabriel Mountains Forever has been working for almost a decade to permanently protect the San Gabriel Mountains, including its wildlife and wilderness. It is our objective to enhance recreational opportunities in our local mountains for kids, families and everyone. Your organization or business can help out by writing a letter of support today.

Efforts Underway to Complete San Gabriel Mountains National Monument, Enhance Recreation and Protect Wilderness

The San Gabriel Mountains are an irreplaceable natural resource and the iconic backdrop to our foothill communities. Located in the Angeles National Forest and San Gabriel Mountains National Monument, these are *our* public lands and we can have a say in how they are protected and managed. Our backyard mountains range supplies 70% of LA County's public open space and 30% of our drinking water. They provide a safe refuge for hundreds of species of plants and animals, some of which are threatened or endangered. The San Gabriels support our outdoor-



oriented lifestyles and enhance our property values. Our San Gabriels are a recreational oasis for over three million people a year, rivaling the attendance at major National Parks like Yosemite and Yellowstone – but with far fewer resources.

Over the year the San Gabriel Mountains have proven to be a troubled paradise,

with threats from invasive species, unprotected wilderness, infrastructure projects like high speed rail, and unsupported recreation. Sometimes the public faces degraded facilities or closed recreational areas. The Forest Service, the agency that manages our federal public lands in the San Gabriel Mountains, has traditionally had little funding for visitor services or visitor

education, law enforcement, trail signage, trash pickup, or programs aimed at youth, kids and families. We are working to change all of this. We need your support to be successful.

Complete the San Gabriel Mountains National Monument

On October 10, 2014 the President created the San Gabriel Mountain National Monument. National, recognizing the national importance of our backyard mountain range and its unique relationship to urban southern California. How is it going so far? The new designation is helping to make the Monument a higher federal funding priority and it is attracting millions of dollars in private support from non-profits like the Forest Foundation. Chronic problems are beginning to be addressed by the Forest Service as it hires more staff, re-opens visitor centers, improves trash pickup and gets more rangers in the field. The Forest Service is making innovative plans to improve the visitor experience in the highly popular areas along San Gabriel River north of Azusa that are currently in terrible shape. Administratively, it makes no sense to have our nearby National Forest divided into two sections, one with more resources and a new management direction and one with less above the foothill communities of Pasadena, La Canada, La Crescenta and Tujunga

A new management plan being developed for the National Monument that should address innovative approaches like transit to trails. We hope to see more programs for youth and families. Expanding the Monument could also give us more leverage in opposing high speed rail



Expanding the Monument could provide added resources for recreation and visitor education for the San Gabriel Mountains above La Canada, La Crescenta and Sunland-Tujunga. Expanding the Monument would give us more leverage to oppose high speed rail routes through the forest.

routes through the San Gabriel Mountains. San Gabriel Mountains Forever is urging that the management plan address the dangerous impacts of high speed rail and oppose routes through the forest.

Permanently Protecting Wilderness

No one can make new Wilderness; we can only better protect what we have. In order that some of our public lands remain forever in their natural, undeveloped state in 1964 Congress established a highly protective land designation called Wilderness. A Wilderness is a section of federal public land (think National Forest in our case) that is managed to preserve its natural character entirely free of all roads, buildings and infrastructure (including high speed rail). Wilderness is the best protection there is for native plants and animals, including ones that are threatened and endangered, and shy creatures like the nelson's bighorn sheep. Wilderness prohibits infrastructure like roads and powerlines that can be source of destructive wildfires. Wilderness protects scenic vistas and enhances all forms of non-mechanized recreation from hiking and horse riding to picnicking and fishing. Care is taken in designing Wilderness so it has



little to no impact on mechanized recreation.

The proposed Condor Peak Wilderness Area is a 17,000 acre natural area that would be permanently protected from all development, roads and infrastructure (including proposed high speed rail routes E2 and E3). Photo Credit: Carol Spurlock.

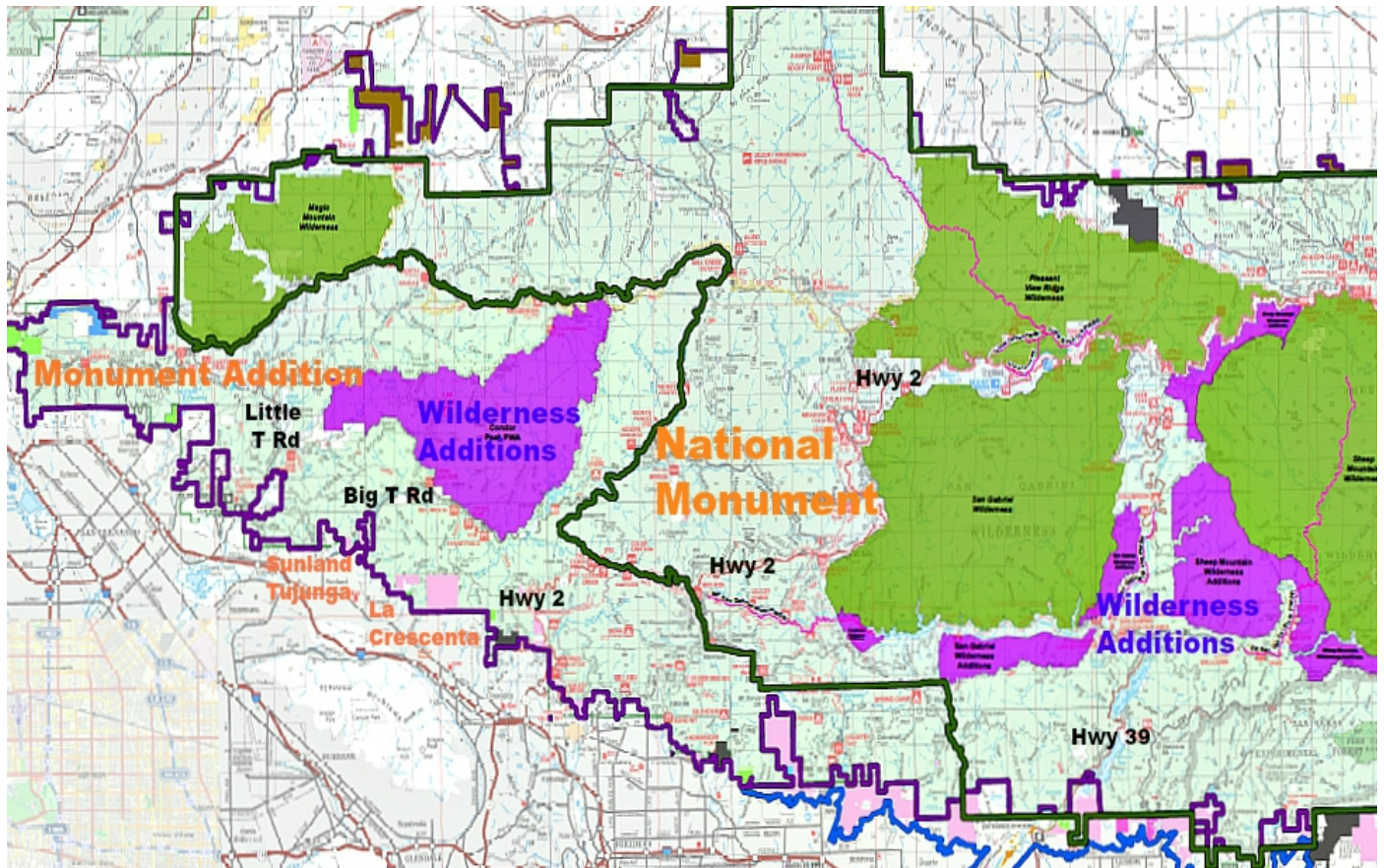
The San Gabriel Mountains have a long and successful history with Wilderness with five major areas currently protected but the wilderness system is not complete. The challenge is that it takes an act of Congress to establish new Wilderness Areas. Join us in asking that Congress extend wilderness protections to all of the major pristine, undeveloped backcountry in the San Gabriel Mountains to keep them that way for us and future generation to enjoy. We need support from business and community groups to get Congress to Act. Congressman Steve Knight

(Republican from Palmdale) recently got the ball rolling with a 70,000 acres wilderness bill covering the proposed Castaic Mountain Wilderness in the northwestern Angeles National Forest between I-5 and CA 14.

Permanently Protect Rivers and Watersheds

We are also working to protect rivers and watersheds from roads and infrastructure in a way similar to the way Wilderness protects pristine National Forest landscapes. Example waterways recommend for Wild & Scenic protection are the upper sections of the San Gabriel River and Little Rock Creek. This protective designation requires the Forest Service maintain the natural character of rivers and develop a plan to protect habitat for fish and amphibians. Again, we need to demonstrate broad public support to have a chance of getting Congress to act to establish Wild & Scenic Rivers in the San Gabriel Mountains.

Map of Proposals



Dark Green Line = Existing San Gabriel Mountains National Monument boundary;
Dark Purple Line = Proposed Expanded National Monument boundary above Sunland-Tujunga and La Crescenta

Green Area = Established Wilderness Area
Purple Areas = Proposed Wilderness Additions to complete the wilderness preservation system.

Red Lines = Wild & Scenic Rivers.

How Your Organization Can Help

We expect legislation to be introduced soon into Congress by our local representatives to expand the San Gabriel Mountains National Monument, establish more wilderness and create Wild & Scenic Rivers. This is all to the good. However, even great ideas have trouble moving through our Congress. **We need to show overwhelming public support to have a chance of success. Your organization can help out by writing us a letter of support today!**

*John Monsen is the representative for San Gabriel Mountains Forever in the Sunland-Tujunga and La Crescenta areas where lived for 25 years. He can provide you with more information, a draft letter of support or schedule a talk for your business or community group. **The best way you can help out is with a letter support.** Email John at wildernessjfm@aol.com or give him call 818-427-5699.*



he |

of |
at |